

XSA800 Series Spectrum Analyzer

Spectrum Analyzer



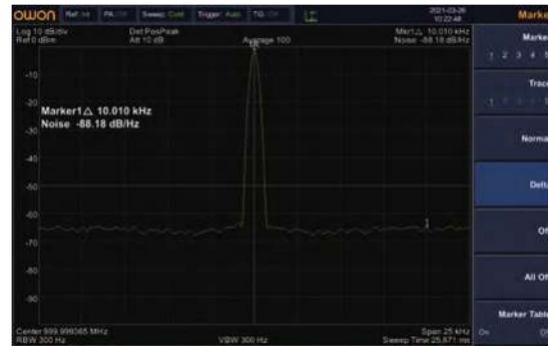
- + Frequency range 9kHz - 1.5GHz
- + -160 dBm Displayed Average Noise Level (DANL)
- + Phase noise -80 dBc/Hz @1GHz and offset at 10 kHz
- + Total amplitude accuracy <math>< 0.7\text{ dB}</math>
- + 1 Hz minimum resolution bandwidth (RBW)
- + EMI pre-compliance test kit, optional EMC test software
- + Optional tracking generator
(standard tracking generator hardware, can be remotely upgraded according to needs)
- + Waterfall plot graphic, modulation signal quality analysis, audio demodulation, ect. multiple general and extended test functions.
- + Standard Pass/Fail on-site test and alert function
- + Multiple interfaces: USB Host, USB Device, LAN, earphone interface, HDMI
- + 9-inch LCD, high resolution 1280×800 pixels

1. Excellent small signal measurement capability



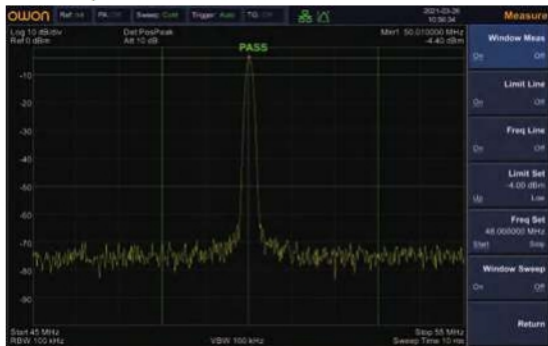
-160 dBm DANL (Displayed Average Noise Level), can observe weaker small signals.

2. More accurate low-noise measurements



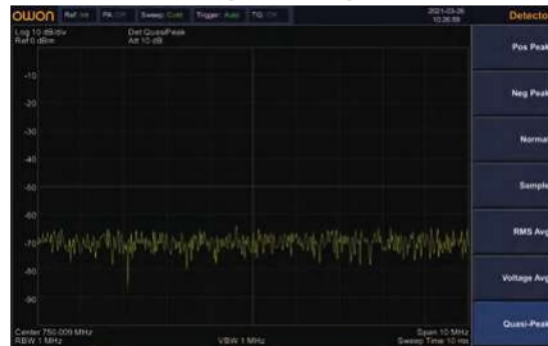
Phase Noise <math>< -80\text{ dBc/Hz}</math> @1GHz at 10 kHz offset

3. Pass/Fail function



Quickly determine if the test results pass

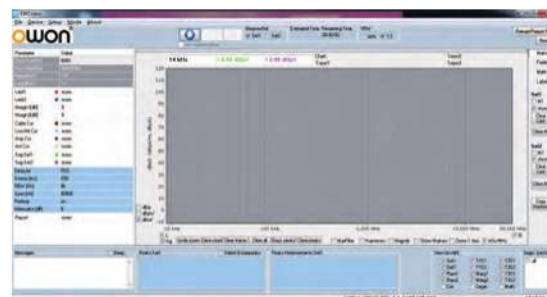
4. Provides EMI pre-compliance test function



Equipped with EMI filter (6dB) and quasi-peak detector as standard, it is more accurate for EMI pre-test and diagnosis, and complete testing and production report can be completed by using supporting software.

5. Provide EMC test function (requires optional software)

Built-in more than 200 mainstream EMC test standards and regulations templates. The user selects the corresponding template, and the software automatically sets the spectrum analyzer and records the test data. The data and regulations can be compared on the same screen. Users can also customize regulations for comparative analysis.



Model	XSA805(TG)	XSA810(TG)	XSA815(TG)
Frequency Range	9 kHz to 500 MHz	9 kHz to 1 GHz	9 kHz to 1.5 GHz
Frequency Resolution	1 Hz		
Reference frequency aging rate	< 1 ppm/year		
SSB Phase Noise(20°C to 30°C, fc = 1GHz)			
Carrier Offset	10 kHz	< -80 dBc/Hz	
	100 kHz	< -100 dBc/Hz	
	1 MHz to 500 MHz	< -115 dBc/Hz	
Resolution Bandwidth (3 dB)	1 Hz to 1 MHz, in 1-3-5-10 sequence		
Video Bandwidth (-3 dB)	10 Hz to 1 MHz, in 1-3-5-10 sequence		
Display Average Noise Level (DANL)	Preamp on, Input attenuation = 0 dB, RBW = VBW = 100 Hz, sample detector, trace average ≥ 50 , 20°C to 30°C, input impedance = 50 Ω		
100 kHz to 1 MHz	-135 dBm (Typical), < -128 dBm		
1 MHz to 500 MHz	-160 dBm (Typical), < -150 dBm		
500 MHz to the upper frequency limit	-158 dBm (Typical), < -148 dBm		
Trace detectors	positive-peak, negative-peak, normal, sample, RMS, voltage average, quasi-peak		
Units of level axis	dBm, dB μ W, dBpW, dBmV, dB μ V, W, V		
Tracking generator frequency range (-TG Model)	100 kHz to the upper frequency limit		
Output power level range(-TG Model)	-40 dBm to 0 dBm		
Output level resolution(-TG Model)	1 dB		
Interface	USB Host, USB Device, LAN, earphone interface, HDMI		
Display	9-inch TFT LCD, 1280 x 800 pixels		

Specifications subject to change without prior notice.

+ Accessories

The accessories subject to final delivery.



Power Cord



Quick Guide



USB Cable



Optional Accessories



N-N Cable



N-SMA Cable



SMA-SMA Cable



SMA Adaptor



N-SMA Adaptor

Near Field Probe includes:
Four near-field probes,
N-SMA adapter,
SMA-SMA cable,
(Frequency range: 30MHz - 3GHz)