

10 Channels Temperature Scanner/Indicator

Temperature Scanner · Indicator



ATS-2000

Features

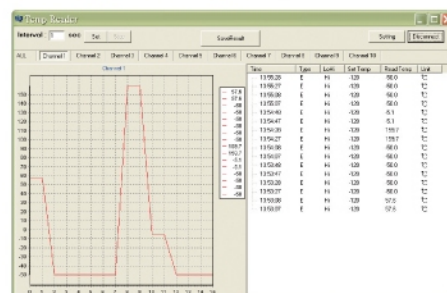
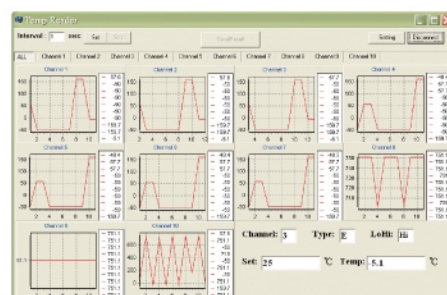
- Large LCD with backlight displays PV and SV value.
- Latching Hi/Low alarm 5A(250VAC) with manual reset.
- Each channel has individual, independent and programmable alarm setpoint with alarm indicator.
- Multi-mode for setting Channel number, °C/°F, Auto/Manual, Scan rate, K/J/T/E type and Hi/Low
- RS232 communication for PC interface.

Specifications

ATS-2000				
Range	Type K	Type J	Type T	Type E
	-58 ~ 2498°F	-58 ~ 1832°F	-184 ~ 752°F	-58 ~ 1382°F
	-50 ~ 1307°C	-50 ~ 1000°C	-120 ~ 400°C	-50 ~ 750°C
Resolution	0.1(<1000), 1(>1000)			
Accuracy	0.15% of Reading ±1°C or 1.8°F			
Power	9V DC			
Channel	10 channels			
RS232	Yes			
Relay	Hi/Low			
Scan rate	2 ~ 60 sec.			



Back Panel

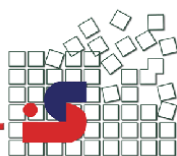


Software Screenshot

شرکت صائن

WWW.SAENCO.COM

021 88936611



www.gondo.com.tw

