

# TES

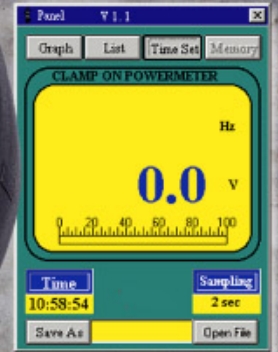
Reliable in Quality



## TES-3063 Power AC/DC Clamp Meter (1Ø2W, 1Ø3W, 3Ø3W, 3Ø4W)

- True Power/Apparent/Power Factor
- RS-232 interface to talk with PC
- Dual display KW + PF , KVA + PF , V+A
- A + Hz , V + Hz
- Datalogging Capacity (4000 Reading)
- Peak/MAX/MIN function

**COSØ, KVA, KW**



E205876  
CE U L CLAMP METER LISTED 81JA

**EN61010-1**  
600V Installation CATIII  
Pollution Degree 2



# TES-3063/3064 Power AC/DC Clamp Meter



## FEATURES

1  $\Phi$  2W, 1  $\Phi$  3W, 3  $\Phi$  3W, 3  $\Phi$  4W

- RS-232 interface to talk with PC
- 4 digits with dual display LCD
- Amp / Voltage frequency measurement
- Dual display KW+PF , KVA+PF , V+A
- 4000 continuity point data logger , 25 point manual

data logger

True power / apparent power / power factor measurement

True RMS. V , A , W , cap , Ind , phase indicator

MIN / MAX measurement

Peak hold detector

Dual display A+Hz , V+Hz



## EN61010-1

600V Installation CAT III

Pollution Degree 2



## SPECIFICATION

True Power & Apparent power measurement

Input	Resolution	Accuracy	Frequency range	Overload protection
V<130V, A<150A	0.01	+/- (2%+5)	45Hz - 500Hz	600V/1100A
V>130V, A<150A				
V<130V, A>150A				
V>130V, A>150A	0.1	+/- (2%+1)		

DCA

Range	Resolution	Accuracy	Overload protection
1000A	0.1A	+/- (1.5%rdg + 5dgts)	1100A

ACA

Range	Resolution	Accuracy	Frequency range	Overload protection
1000A	0.1A	+/- (1.5%rdg + 5dgts)	45Hz - 500Hz	1100A

· Crest Factor: <4 for stated accuracy

DCV

Range	Resolution	Accuracy	Input Impedance	Overload protection
600V	0.1V	+/- (0.5%rdg + 5dgts)	1M $\Omega$	600V

## ACV

Range	Resolution	Accuracy	Input Impedance	Frequency range	Overload protection
600V	0.1V	+/- (0.5%rdg + 5dpts)	1M $\Omega$	45Hz - 500Hz	600Vrms

· Crest Factor: <3 for stated accuracy

## Peak Indication

Range	Resolution	Accuracy	Overload protection
20A - 80A	0.1A	+/- (10%rdg + 10dpts)	1100A
80A - 1000A		+/- (6%rdg + 10dpts)	

· Peak Detect Acquisitions Time<=1ms

## Peak Indication

Range	Resolution	Accuracy	Overload protection
20V - 80V	0.1V	+/- (10%rdg + 10dpts)	600Vrms
80V - 600V		+/- (6%rdg + 10dpts)	

· Peak Detect Acquisitions Time<=1ms

## Audible continuity

Range	Continuity beeper	Open circuit voltage	Overload protection
	<=0.050	<=3.2V	600Vrms

## Resistance ( $\Omega$ )

Range	Resolution	Accuracy	Frequency range	Overload protection
10K $\Omega$	1 $\Omega$	+/- (1%rdg + 5dpts)	<=3.2V	600Vrms

## Diode test

Range	Resolution	Overload protection
	0.001V	600Vrms

## Frequency (Hz)

Range	Resolution	Accuracy	Voltage sensitivity	Overload protection
1KHz	0.1Hz	+/- (0.5%rdg + 5dpts)	10V or 10A	600V / 1100A
5KHz	1Hz			

☑ Optional Accessories: TES-3064 RS-232 Interface Adaptor / Software

## GENERAL SPECIFICATIONS

Maximum Voltage between any terminal and earth ground	600Vrms
Numerical Dual Display	4 digit liquid crystal display (LCD) maximum reding 9999.
Bargraph display	40 Segments.

<b>Battery Life</b>	30hr approx. (Alkaline)
<b>Jaw Opening Diameter</b>	Cables f 46mm.
<b>Operating Temperature and Humidity</b>	0 °C to 50 °C (32 °F to 122 °F ) R.H. < 80% non-condensing.
<b>Storage Temperature and Humidity</b>	-10 °C to 60 °C (14 °F to 140 °F ) R.H. < 70% non-condensing.
<b>Dimensions</b>	260mm(L) x 93mm(W) x 45mm(H)
<b>Weight</b>	Approx. 450g
<b>Accessories</b>	Carrying Case, Test leads, One 9V Battery & Instruction manual

